

## Spring Webinar Series

### March

3/12 School Psych Learning Community

3/18 DBI: Using FBA for Diagnostic Assessment in Behavior

3/20 Autism 101: Signs, Symptoms, and Eligibility

3/26 MTSS: Tier 3

### April

4/9 School Psych Learning Community

4/17 Traumatic Brain Injury 101: Signs, Symptoms, and Eligibility

4/22 DBI: What Do I Do Now?  
Individualizing Academic Interventions when Standard Approaches Don't Work

4/23 MTSS: Using the MTSS Fidelity Rubric To Create An Action Plan

### May

5/6 DBI: What Do I Do Now?  
Individualizing Behavior Interventions when Standard Approaches Don't Work

5/14 School Psych Learning Community

## Meet the Outreach Program Director

**Barton Lyman** is originally from Cody, Wyoming and currently works as the Outreach Program Director for Region V B.O.C.E.S. in Evanston, Wyoming. He has a Bachelor of Science in Business Management with a minor in Psychology from the University of Wyoming. He completed an Educational Specialist degree in School Psychology from Brigham Young University, and holds a Diplomate in School Neuropsychology and a certificate in Educational Leadership. In addition, he served as the Wyoming Multi-Tiered Systems of Supports Coach and is a member of the National Association of School Psychologists.

## Outreach Program Staff & Presenters

**Dr. Cady Williams**, LCP, worked for ten years as a school counselor in Utah, Idaho and Wyoming prior to completing her pre-doctoral training at the University of New Mexico Health Sciences Center, and her post-doctoral training at the Neuropsychology Center of Utah.

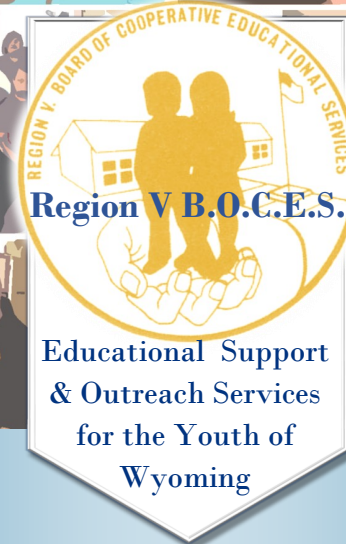
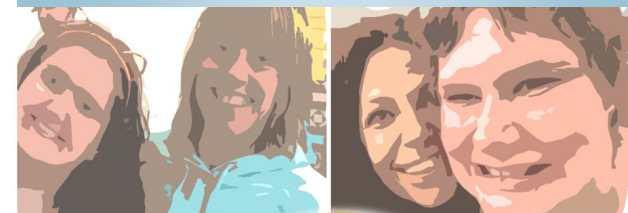
**Dr. Jessica Andrews**, LCP, uses a strengths-based and collaborative approach when working with clients. She obtained her M.S. and Doctor of Psychology degree in Clinical Psychology from Pacific University in Hillsboro, Oregon. She has a B.A. in Psychology from the University of California, Santa Cruz.

**Keith Mader**, LCS, is the Director of Therapeutic services at C-V Ranch Residential Treatment Facility. He has worked in the field since 1983 and is considered an expert in several areas of intervention programming, including Trauma Informed Care, Dialectical Behavior Therapy, and Eye Movement Desensitization Reprocessing.

**Josh Anderson** is the Program Director at Hayden Peak Academy in Evanston, Wyoming. He is an experienced teacher, special education case manager, and school director. His expertise lies in utilizing intensive interventions and data-based individualization to influence academic and behavioral success in students with disabilities.

**David Briggs**, ED.S, NCSP is a nationally certified school psychologist. He earned his bachelor's in psychology from Brigham Young University-Idaho, an Educational Specialist Degree from the University of Northern Colorado-Greeley and a Masters in Educational Leadership from the University of Wyoming. He specializes in diagnosis (testing and assessment) and treatment.

## Outreach Webinar Series Fall 2019-Spring 2020



## Region V B.O.C.E.S. Outreach

For more information, contact  
Bart Lyman  
Outreach Program Director

E-mail: [blyman@boces5.org](mailto:blyman@boces5.org)  
Phone: 307.733.8210

Or visit our website:  
<http://www.boces5.org>

## Region V B.O.C.E.S. Outreach Webinars

Region V B.O.C.E.S. Outreach Services has created the 2019-2020 Webinar series in an effort to address the ongoing needs of educators and special education professionals within our region and throughout the state of Wyoming.

These webinars provide viewers with valuable insight and techniques to work with students who present with challenges ranging from physical, mental and behavioral disorders to those brought on by traumatic brain injury and trauma or neglect. Our highly knowledgeable presenters have over sixty years of cumulative experience, and are widely considered experts in the field.

Our sincere hope is that participants will find these presentations helpful and reach a deeper level of understanding, and gain both personal and professional insight within the field.

\*Each webinar series is PTSB approved and can be presented for continuing education credit.

## Region V B.O.C.E.S. Network

**Outreach Services Special Education Support**  
Evanston, Wyoming

**C-V Ranch Residential Treatment Facility**  
Wilson, Wyoming

**Roosevelt Learning Center**  
Green River, Wyoming

**Sunrise School**  
Hudson, Wyoming

**Hayden Peak Academy**  
Evanston, Wyoming

## Fall Webinar Series

### September

- 9/12 School Psych Learning Community
- 9/17 ASD Evaluation Part 1: Signs, Symptoms, and Diagnostic Criteria
- 9/25 DBI: Getting Ready to Implement Intensive Intervention: Infrastructure for Data-Based Individualization
- 9/26 MTSS: Overview

### October

- 10/03 ADHD and Executive Functioning Disorders
- 10/8 Compassion Fatigue: Personal and Professional Care (Pre Requisite: Intro to Compassion Fatigue)
- 10/10 School Psych Learning Community
- 10/15 ASD Evaluation Part 2: Selecting and Interpreting a Test battery
- 10/18 Specific Learning Disabilities 101: Signs, Symptoms, and Eligibility
- 10/24 MTSS: Screening
- 10/28 DBI: Introduction to Data-Based Individualization (DBI): Considerations for Implementation in Academics and Behavior

### November

- 11/5 Compassion Fatigue: Organizational Strategies (Pre Requisite: Intro to Compassion Fatigue)
- 11/12 Restorative Practices Part 1: Affective Statements and Community Circles
- 11/14 School Psych Learning Community
- 11/15 Emotional Disturbance 101: Signs, Symptoms, and Eligibility
- 11/21 MTSS: Data-Based Decision Making
- 11/25 DBI: Secondary Interventions: Setting the Foundation for Intensive Support

## Winter Webinar Series

### December

- 12/3 Dialectical Behavior Therapy: Distress Tolerance Skills (Pre Requisite: DBT: Best Practice For Trauma Informed Care)
- 12/05 Self-Harm/Cutting (Non-suicidal self-injury)
- 12/10 Restorative Practices Part 2: Community Circles and Restorative Questions
- 12/12 School Psych Learning Community
- 12/13 Intellectual Disability 101: Signs, Symptoms, and Eligibility
- 12/17 MTSS: Tier 1
- 12/18 DBI: Using Academic Progress Monitoring for Individualized Instructional Planning

### January

- 1/8 Dialectical Behavior Therapy: Emotional Regulation Skills (Pre Requisite: DBT: Best Practice For Trauma Informed Care)
- 1/9 School Psych Learning Community
- 1/17 Multiple Disabilities 101: Signs, Symptoms, and Eligibility
- 1/23 MTSS: Progress Monitoring
- 1/29 DBI: Monitoring Student Progress for Behavioral Interventions

### February

- 02/06 Psychopharmacology 101
- 2/11 Trauma-Informed FBA and BIPs
- 2/13 School Psych Learning Community
- 2/19 DBI: Informal Academic Diagnostic Assessment: Using Data to Guide Intensive Instruction
- 2/21 Other Health Impairment 101: Signs, Symptoms, and Eligibility
- 2/27 MTSS: Tier 2